

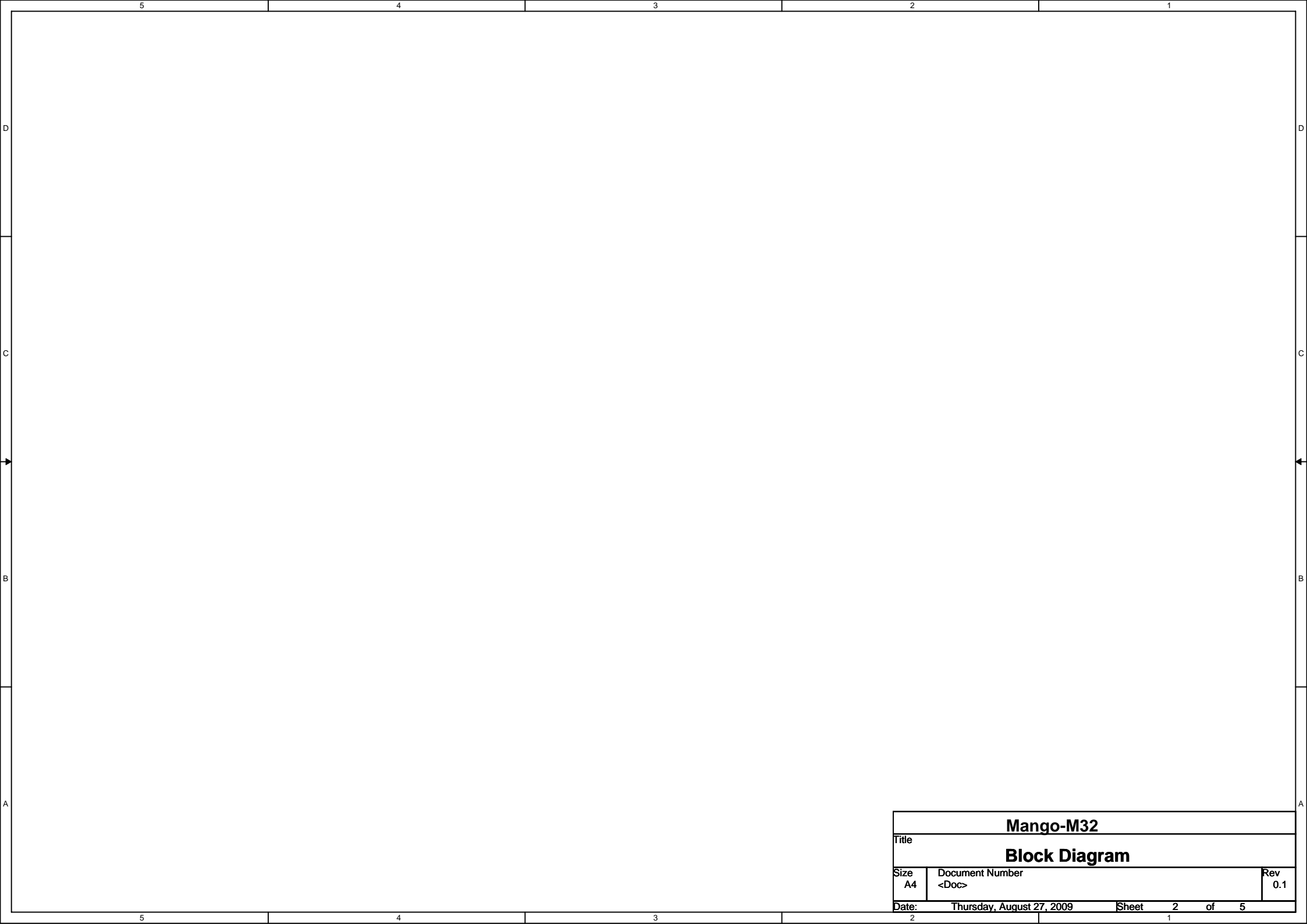
Mango-M32

STM32F103XXX Module

DATE: 27 AUG 2009

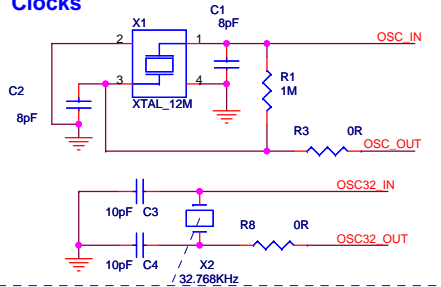
- P10-1 TITLE
- P10-2 SYSTEM BLOCK
- P10-3 HISTORY
- P100 - STM32
- P200 - TRANCEIVER_PA
- P300 - Power_USB_RS232

Mango-M32			
Title		TITLE	
Size	Document Number		Rev
A	<Doc>		0.1
Date:	Monday, October 05, 2009	Sheet	1 of 5



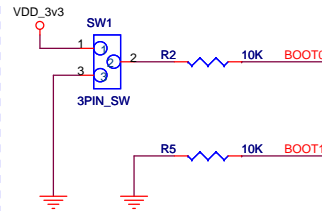
Mango-M32			
Title			
Block Diagram			
Size	Document Number		Rev
A4	<Doc>		0.1
Date:	Thursday, August 27, 2009		Sheet 2 of 5

Clocks

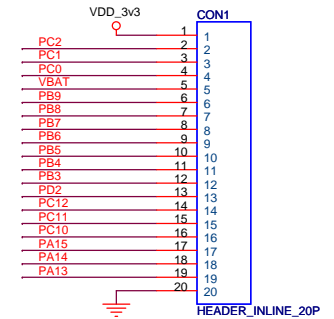
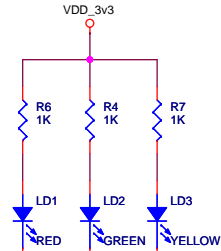


크리스탈은 배치만 하고
PLACE하지 않는다.

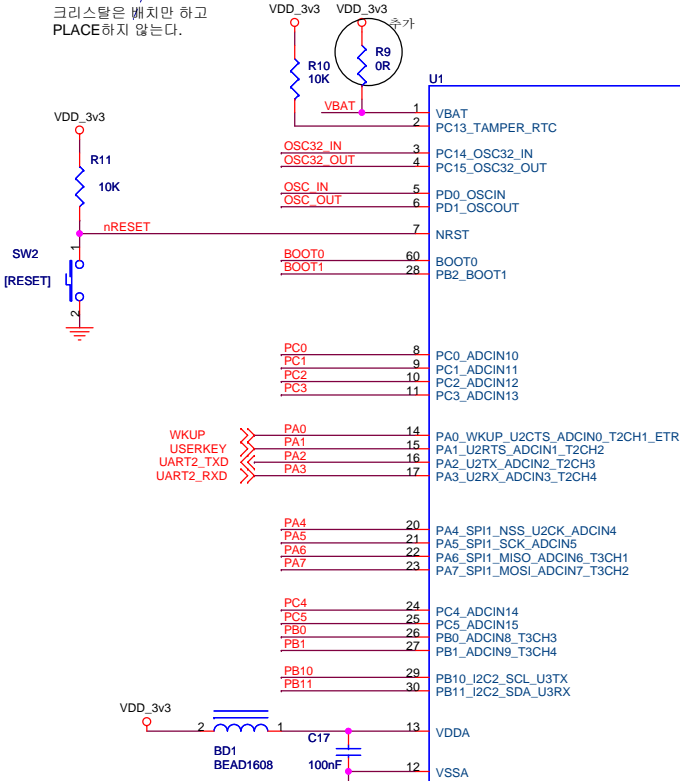
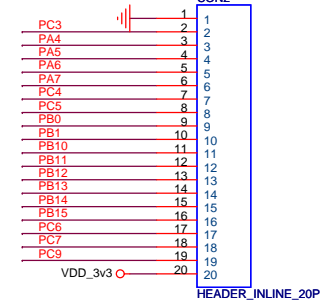
Boot Mode Selection



Boot Mode Selection		Boot Mode
Boot1	Boot0	
X	0	User Flash memory
0	1	System Memory
1	1	Embedded SRAM



2.54Pitch X 2



STM32F103RBT6_LQFP64

7-Segment FND

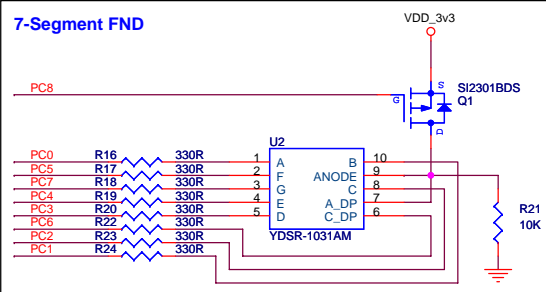
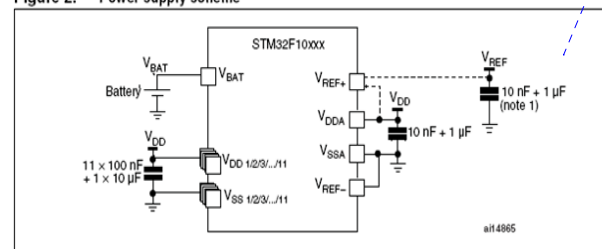
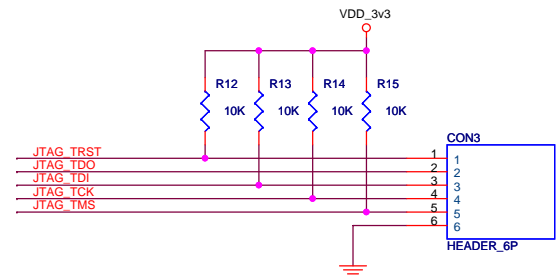
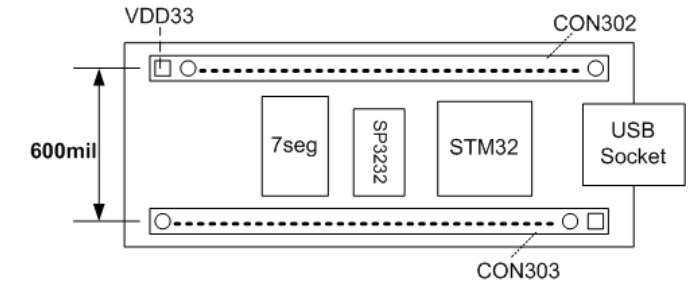


Figure 2. Power supply scheme



- Optional. If a separate, external reference voltage is connected on V_{REF+} , the two capacitors (10 nF and 1 μ F) must be connected.
- V_{REF+} is either connected to V_{DDA} or V_{REF} .

Power Supply 설계 가이드(데로 CAP 배치



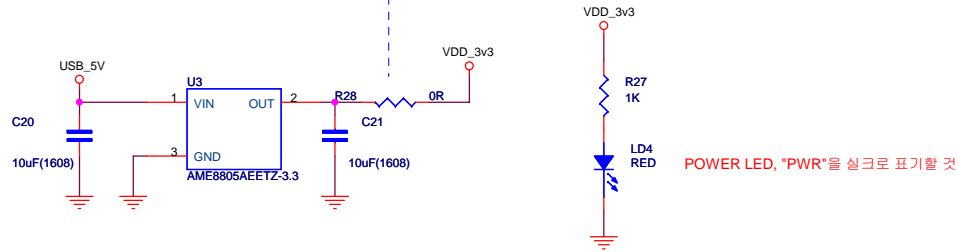
Mango-M32

STM32 Microcontroller

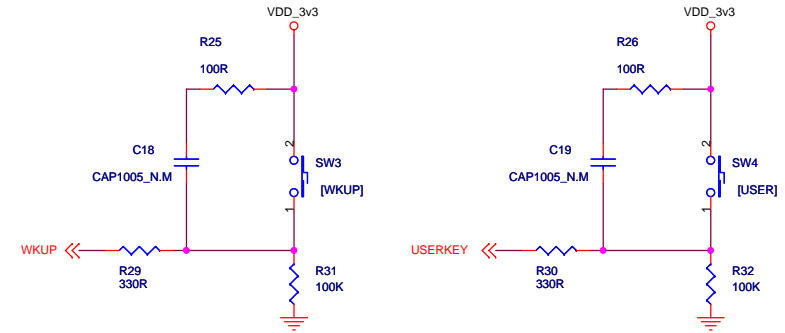
Size	Document Number	Rev
A3	<Doc>	0.1
Date:	Thursday, August 27, 2009	Sheet 4 of 5

Main Power

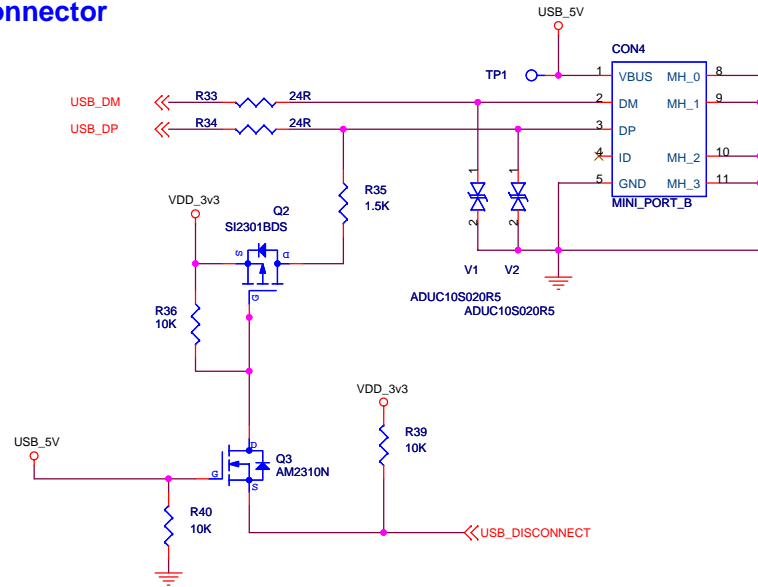
파워선택, USB파워를 쓸 경우-센트 장착,
커넥터에서 파워를 가져올 경우-센트제거



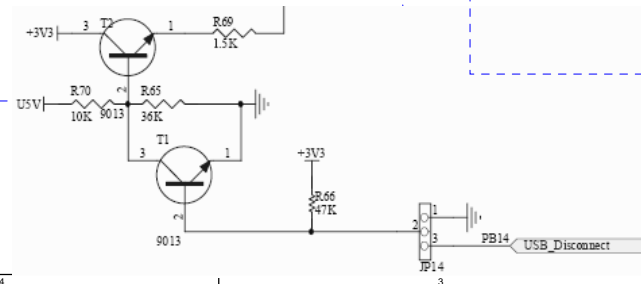
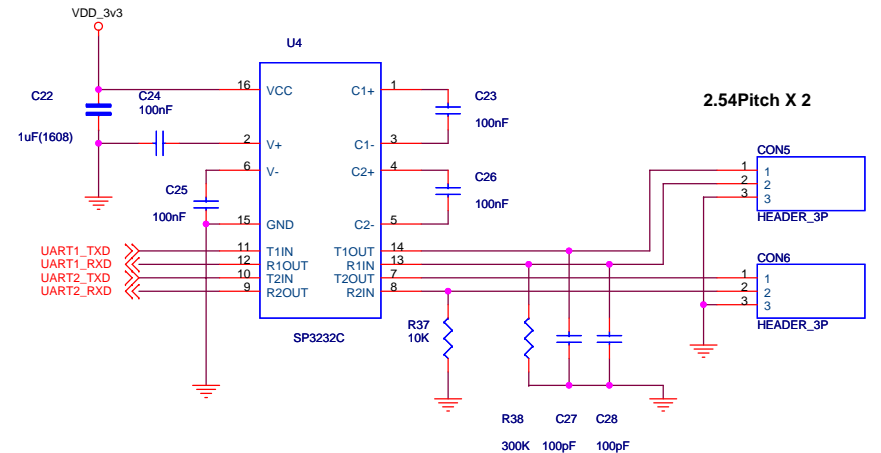
Keys



USB Connector



RS-232C



Mango-M32		
Title		
Peripherals		
Size A3	Document Number <Doc>	Rev 0.1
Date:	Thursday, August 27, 2009	Sheet 5 of 5