

Complete **Anatomy**
from ELSEVIER

3D 해부학 솔루션
Complete Anatomy
활용 가이드



Complete **Anatomy**

유순 Account Manager

Elsevier Korea

ELSEVIER | EMEALAAP

Health Solutions

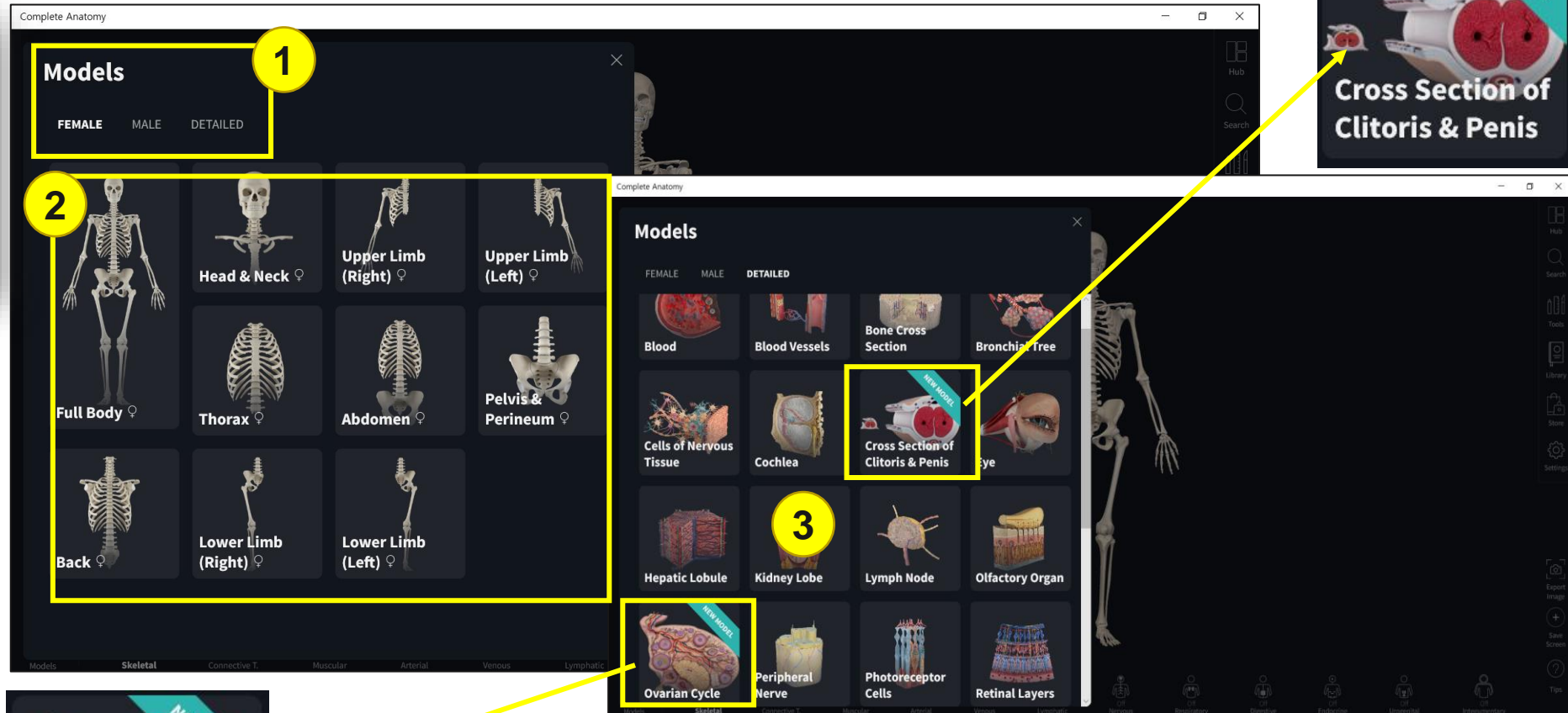
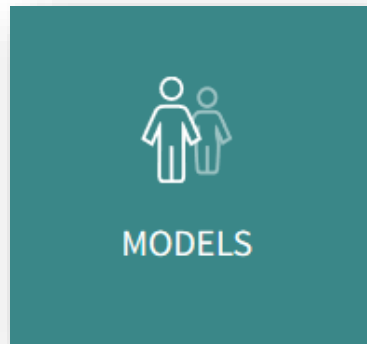
www.elsevier.com

Phone +82 2 6714 3127

l.ryu@elsevier.com

Fax 02-725-4388

❑ Models: Female(10), Male(10), Detailed(28)



1. Female Model 업데이트되어, Male 모델과 비교 가능
2. 주요 골격, 기관, 조직 및 시스템을 확인 가능
3. 특히, Cross Section of Clitoris & Penis 및 Ovarian Cycle 등의 Detailed 구조도 확인 가능

Frontal Bone
Os frontale

- ISOLATE
- HIDE
- FADE
- HIDE OTHERS
- FADE OTHERS

Info Cross-Sections Parts **Surface**

Cerebral Surface of Orbital Part of Frontal Bone (Left)
Facies cerebrealis partis orbitalis ossis frontalis

Cerebral Surface of Orbital Part of Frontal Bone (Right)
Facies cerebrealis partis orbitalis ossis frontalis

External Surface of Squamous Part of Frontal Bone
Facies externa squamae frontalis

Internal Surface of Squamous Part of Frontal Bone

Region: Head & Neck

Tools

ANNOTATE TOOLS

Pen Labels Textbox Sketch

CUTTING TOOLS

Cut Fracture

GROWTH TOOLS

Growth Spurs

OTHER TOOLS

Pain Discover Import

Export Image
+
Save Screen
? Tips

Models **1** Bone Skeletal Off Connective T. Off Muscular Off Arterial Off Venous Off Lymphatic **Layer 1 Nervous** Off Respiratory Off Digestive Off Endocrine Off Urogenital Off Integumentary

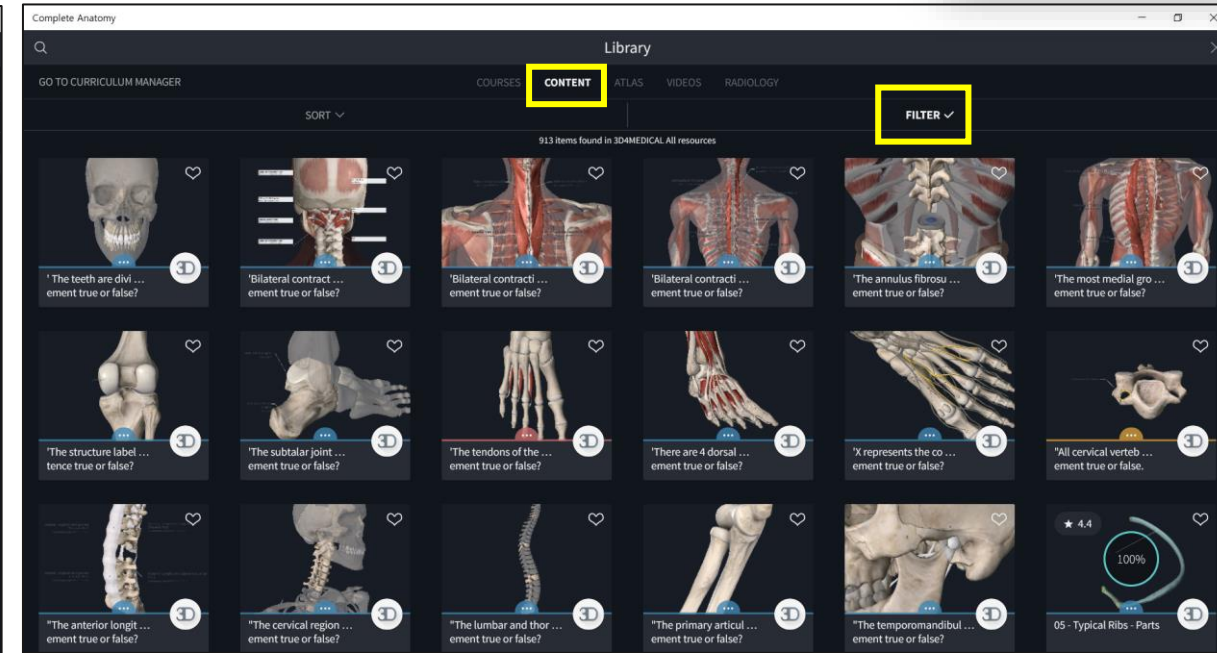
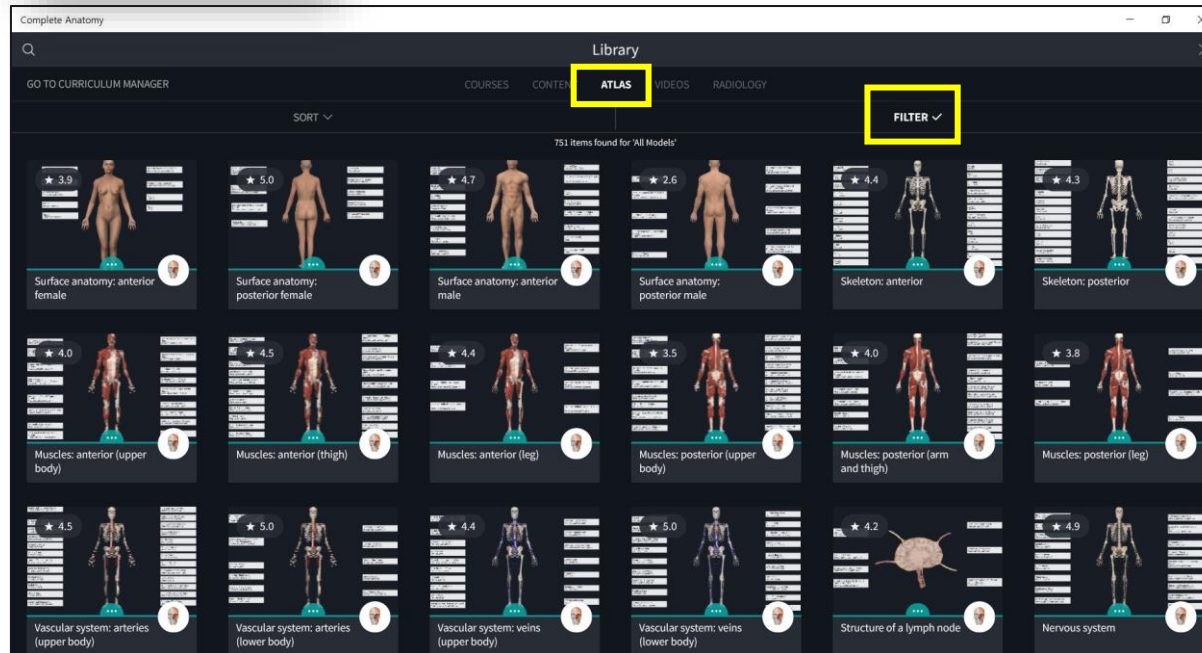
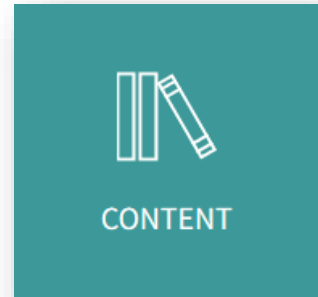
- 아래 신체 구조를 터치/클릭하여 각 신체계통별 구조를 레이어링하여 확인 가능
- 레이어링한 신체 구조 일부를 터치/클릭하여 왼쪽 Box에서 자세한 설명 및 cross section/parts 등 확인 가능
- 레이어링한 신체 구조 일부를 터치/클릭하여 Isolate, Hide, Fade 등 진행하여 세부 구조 파악 가능
- Tools: 일부분을 Cut하여 구조 파악 가능, 펜/라벨링 등으로 내용 추가 가능
- Export Image (이미지 반출), Save Screen(현재화면저장), Tip(주요 기능 안내) 확인 가능

❑ Atlas(700+) & Contents(900+)

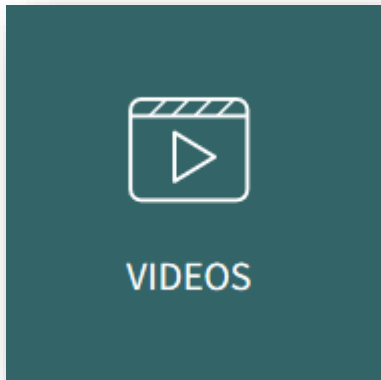


[ATLAS] Complete Anatomy에서 이미 제작한 라벨링 등이 완성된 스크린 모음
[CONTENT]

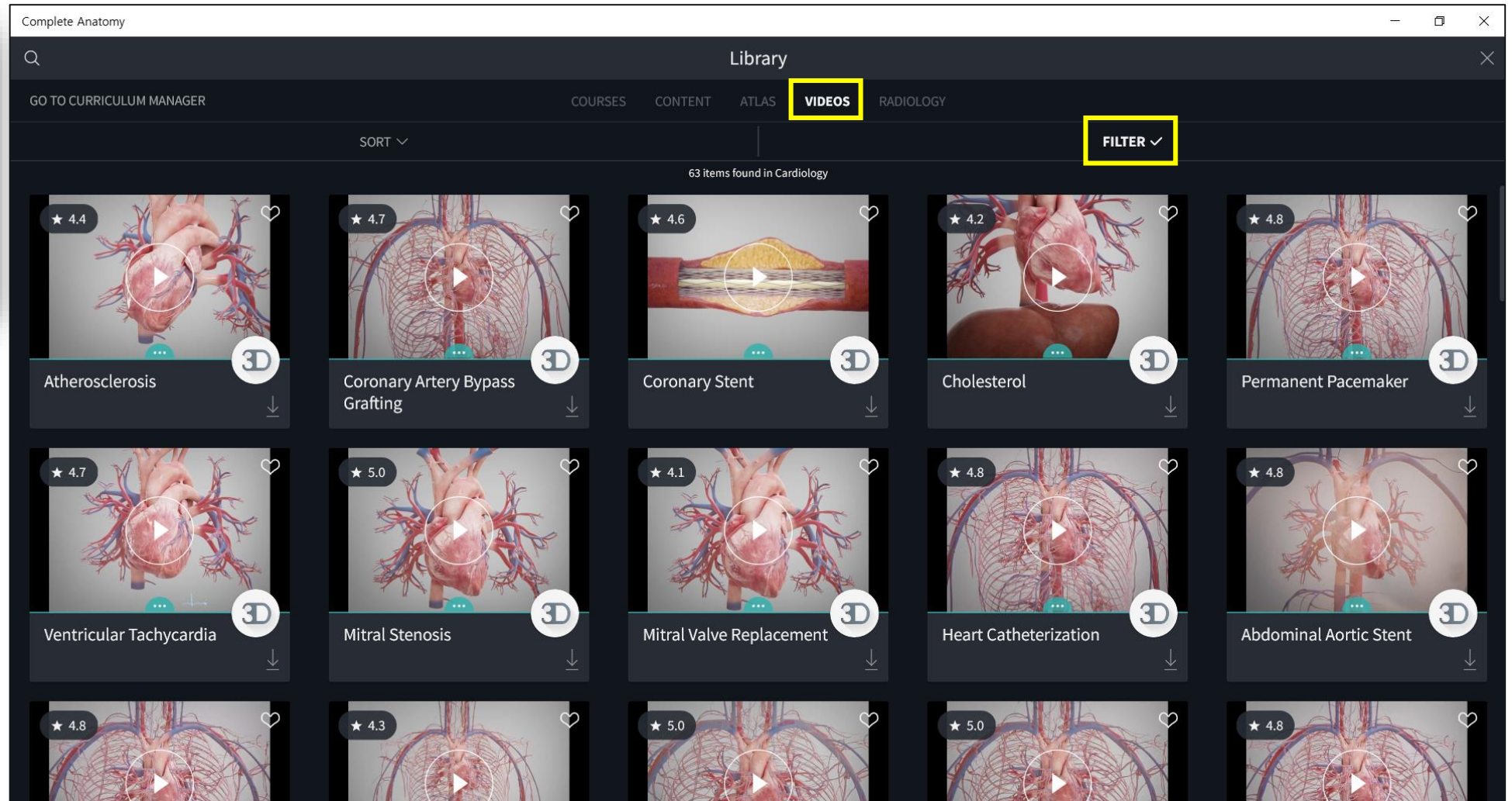
- Complete Anatomy에서 이미 제작한 Quiz(선다형), Question(T/F) 모음
- 교수자가 직접 저장한 스크린, Quiz(선다형), Question(T/F) 확인 가능



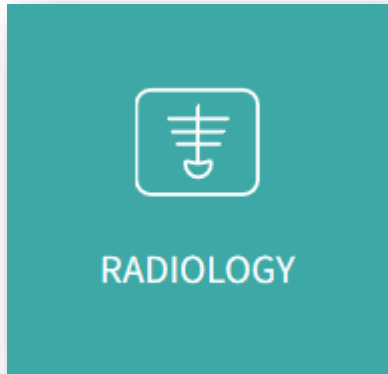
❑ Videos(1,400+): Cardiology, Ophthalmology, Orthopedics, Dentistry, Fitness



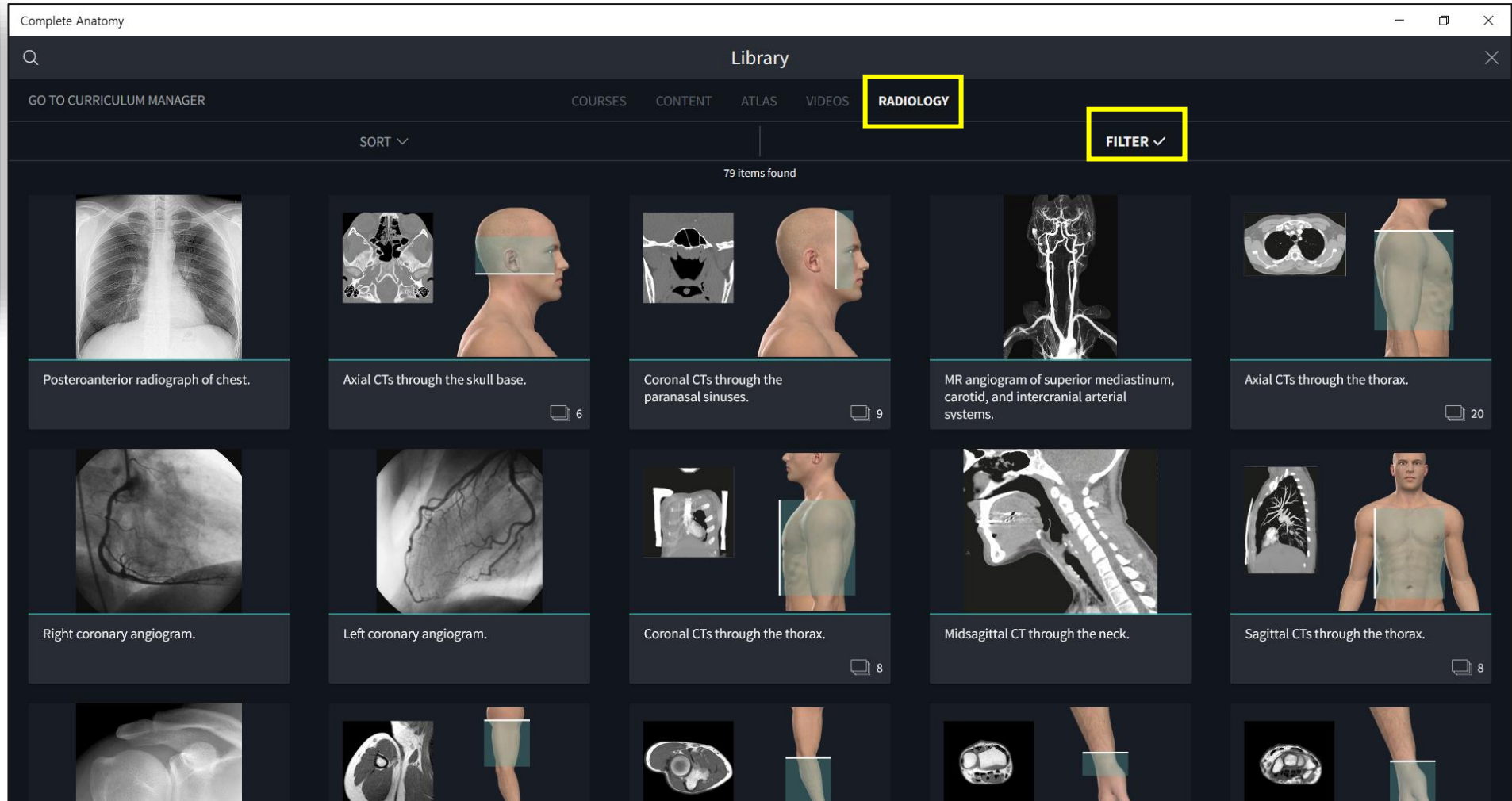
- Condition (ex. Abnormal Rhythms, Cardiac Tumours 등)확인 가능)
- Treatment (ex. Coronary Artery Bypass/Coronary Stent 등)확인 가능



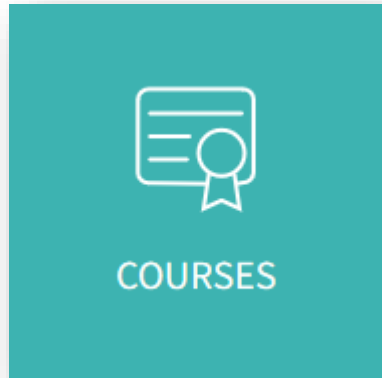
❑ Radiology(79): MRI, CT, Angiogram, Radiographs, Mammograms



- MRI, CT 촬영 이미지
- Angiogram(혈관 조영술 이미지)
- Radiographs(방사선 이미지)
- Mammograms(유방 조영술 이미지)



❑ Course: 21 Items, 300+ Lectures (Cardiology/Cardiovascular Surgery, Emergency Medicine & Trauma...)



[Example]

- Human Anatomy
- Anticoagulation Management
- Basic 12 Lead EKG Interpretation
- Cardiology/ Cardiovascular Surgery

Complete Anatomy

Library

GO TO CURRICULUM MANAGER

COURSES CONTENT ATLAS VIDEOS RADIOLOGY

SORT ▾

21 Items found in 3D4MEDICAL

Abrahams' Clinical Human Anatomy
Screens-only
Abrahams' Clinical Human Anatomy course includes 500 clinical images collected by the leading international anatomist Professor Peter Abrahams throughout his career. This interactiv...
🕒 10-15 Hours
by 2 Authors ★ 4.5 31 Lectures MORE

Anticoagulation Management Made Easy
Take the complicated process of managing anticoagulation and reduce it to a simple algorithm for success! Taught by two clinical pharmacists who both work in a dedicated ...
Dr. John Russell ★ 4.1 5 Lectures MORE

Basic 12 Lead EKG Interpretation
Learn how to interpret a 12-lead electrocardiogram used to evaluate the human heart, taught by a heart surgery nurse practitioner and doctor of nursing practice! This two hour ...
Dr. John Russell ★ 4.4 20 Lectures MORE

Cadaveric Images
Skeletal and Muscular Systems: Screens-only
An anatomy laboratory review course designed to supplement medical, graduate, or advanced undergraduate anatomy courses studying the human ...
Sensitive Content Discretion Advised

Cardiology / Cardiovascular Surgery
Clinical Medicine
Broadly, clinical content will cover Cardiomyopathy, Conduction

Cardiothoracic Dissection
Thorax Anatomy
A narrated review of high-yield thorax anatomy that features a cadaver dissection to study the chest wall, lungs, heart, mediastinum.
Sensitive Content Discretion Advised

❑ Tutorials: Using the Model, Infobox, Tools, Library, Educator & Faculty Features

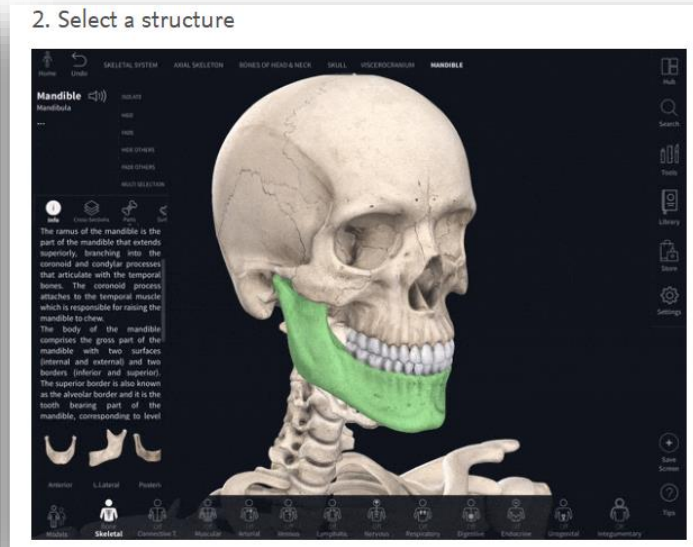
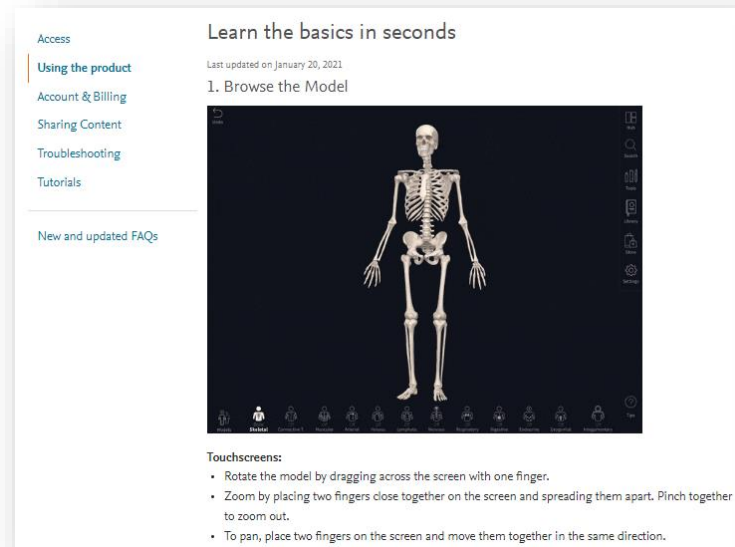
- <https://3d4medical.com/category/support/complete-anatomy/tutorials>

❑ Complete Anatomy Support Center: Access, Using the product...

- <https://service.elsevier.com/app/home/supporthub/complete-anatomy/>

(ex. Learn the basics in seconds: 터치스크린과 PC에서 마우스 조작 방법, 구조 선택 방법 등)

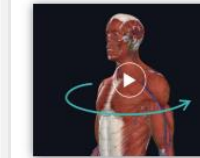
https://service.Elsevier.com/app/answers/detail/a_id/31766/session/L3RpbWUvMTY2MDAxOTg0Ni9nZW4vMTY2MDAxOTg0Ni9zaWQvZlU0S0dleGZhNEVGeiU3RVYIN0V4dldKREQ3UTgxSkZ5dXNueDBXY3NSY2RfTVI4MUdDN29tdFc4dUVDUjFSSGVGeV8yYk9qQnNSbEJSd3RLU2t5S0RQdk56ZIB3WF9pWXRteUZkZSU3RVJsWjJKTzRwcTFJZU43c9nSWInJTlxJTlx/supporthub/complete-anatomy/p/16967/



Tutorials

JUMP TO CATEGORY

Using the Model



Navigating the Model
Get started with our 3D Model by learning how to rotate, zoom, pan and select

[READ TUTORIAL >](#)



Selecting grouped structures / clusters
Quickly select parent groups of a selected structure using the Breadcrumb Trail

[READ TUTORIAL >](#)



Choosing your model
Choose the sex of the model, or focus on a particular body region or microanatomy model.

[READ TUTORIAL >](#)

Infobox



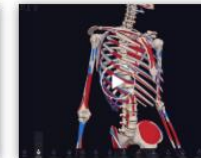
Infobox Overview
Learn about selecting from the model, view options, and system-specific functions.

[READ TUTORIAL >](#)



Multiselect & Explode
Select multiple structures together to apply view options or to explode them.

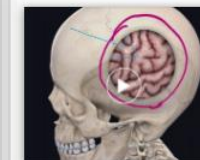
[READ TUTORIAL >](#)



Muscle Origin & Insertion
View the attachment points of a muscle using the Origin and Insertion tool.

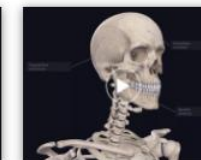
[READ TUTORIAL >](#)

Tools



Pen
Draw directly on the model or on the screen with the Pen tool, allowing the flexibility to annotate in the best way for you

[READ TUTORIAL >](#)



Labels
Attach labels to highlight and save your view of a structure

[READ TUTORIAL >](#)



Textbox
Type a note and add it to your model position.

[READ TUTORIAL >](#)

❑ AR Mode 호환 디바이스 안내

- https://service.elsevier.com/app/answers/detail/a_id/31786/supporthub/complete-anatomy/kw/AR/
- System requirements for Complete Anatomy 부분에서 AR Mode 호환 디바이스 확인이 가능합니다.

iPad

AR Mode:

- iPad Pro (all models)
- iPad (2017 or newer)
- iPad mini 5
- iPad mini 6

iPhone

AR Mode:

- iPhone 6S or newer

Android and Chromebooks

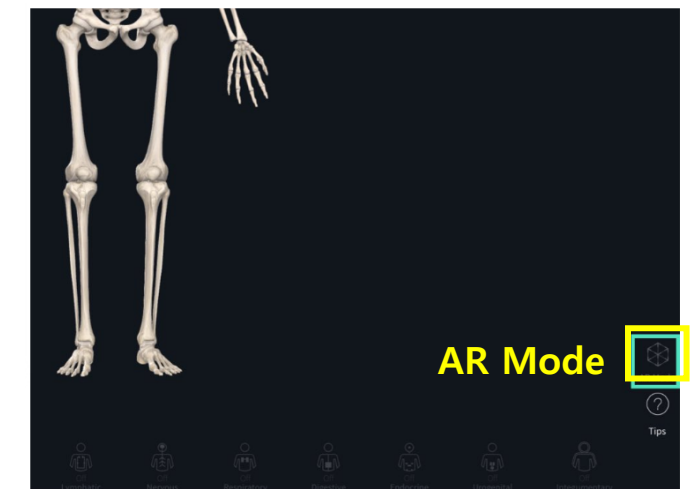
AR Mode

- [ARCore supported devices](#) ➔

<https://developers.google.com/ar/devices>

❑ AR Mode 설정 안내

- <https://3d4medical.com/support/complete-anatomy/ar>
 - Model 화면 오른쪽 하단의 AR 모드 버튼을 클릭하거나,
 - AR 모드 버튼이 보이지 않으면 Settings → Preferences → Active Features → Activate AR 클릭합니다.
 - Activate AR 표시되지 않으면 디바이스가 AR과 호환되지 않는 것입니다.





Thank you

유순 Account Manager, Elsevier Korea

ELSEVIER | EMEALAAP Health Solutions | www.elsevier.com

Phone +82 2 6714 3127 | l.ryu@elsevier.com | Fax 02-725-4388

