

INTERIOR DESIGN PROPOSAL

부천대학교
소사캠퍼스 3층 치기공학과

치과재료학 실습실 | 기초기공 실습실 |
고정정보철기공 실습실 | 치과모형 작업실



BUCHEON
UNIVERSITY

CONTENTS

01

소사캠 3F
치기공학과
4개실 평면도
[310 ~ 315]

02

소사캠 3F
치기공학과
치과재료학 실습실
[314,315]

03

소사캠 3F
치기공학과
기초치기공 실습실
[312,313]

04

소사캠 3F
치기공학과
고정성보철치기공 실습실
[310]

05

소사캠 3F
치기공학과
치과모형 작업실
[311]

01 | 소사캠퍼스 3F - 치기공학과 4개실

CAD DRAWING – FLOOR PLAN



A 치과재료학 실습실
 AREA: 31py / 102.5m²
 CH: 2,705 mm

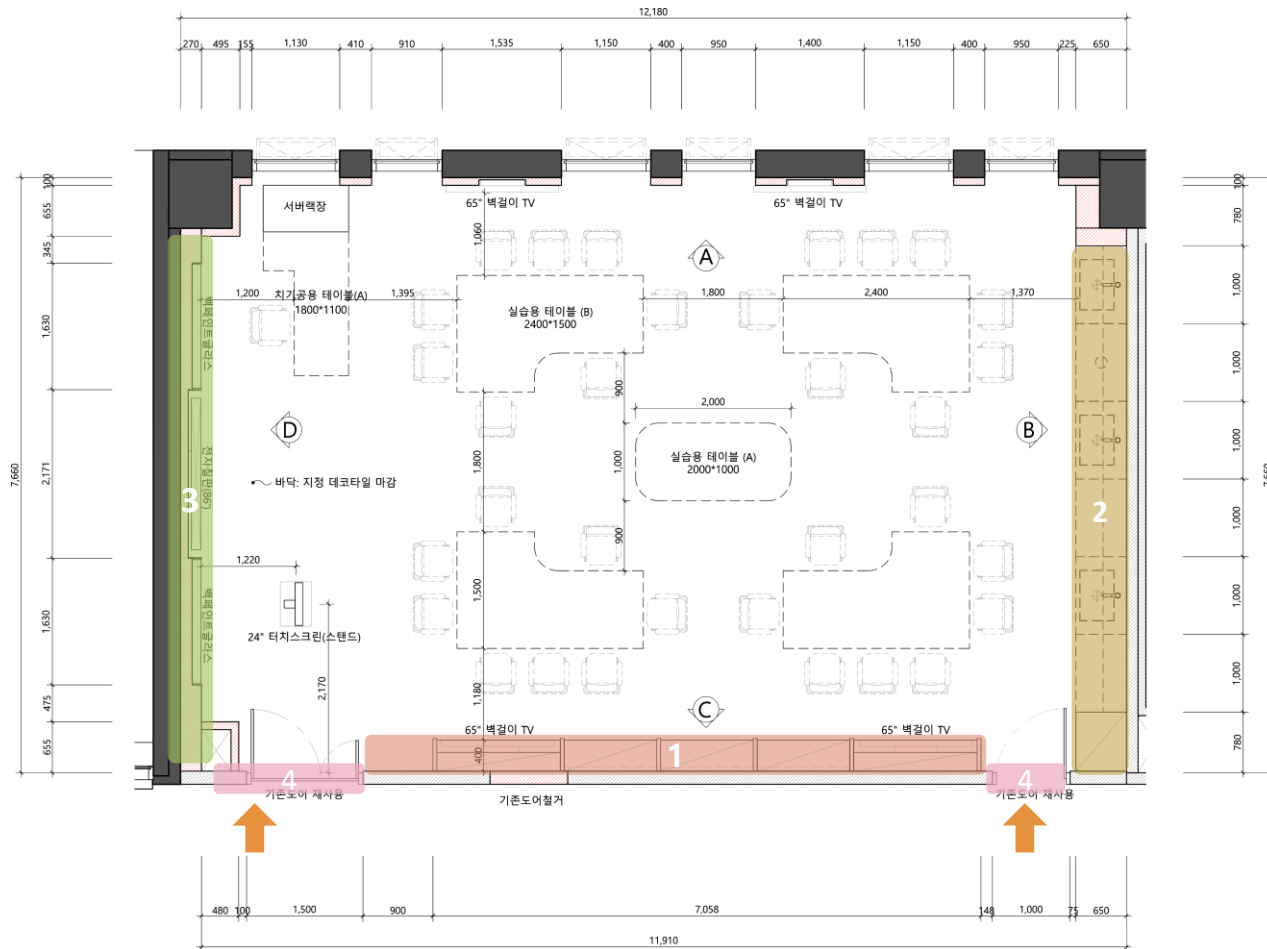
B 기초치기공 실습실
 AREA: 29py / 95.9m²
 CH: 2,705 mm

C 고정성보철치기공 실습실
 AREA: 37py / 122.3m²
 CH: 2,705 mm

D 치과모형 작업실
 AREA: 17.2py / 57m²
 CH: 2,705 mm

02 | 치과재료학 실습실

CAD DRAWING – FLOOR PLAN



FLOOR PLAN

- 1 북도측 벽면 65" TV 장 & 진열장 설치
- 2 강의실 뒤 싱크장 & 상부장(제작) 설치
- 3 강의실 앞 백페인트글라스 칠판 + 전자칠판 매립설치
- 4 출입문 개방성 있는 유리강화도어 설치

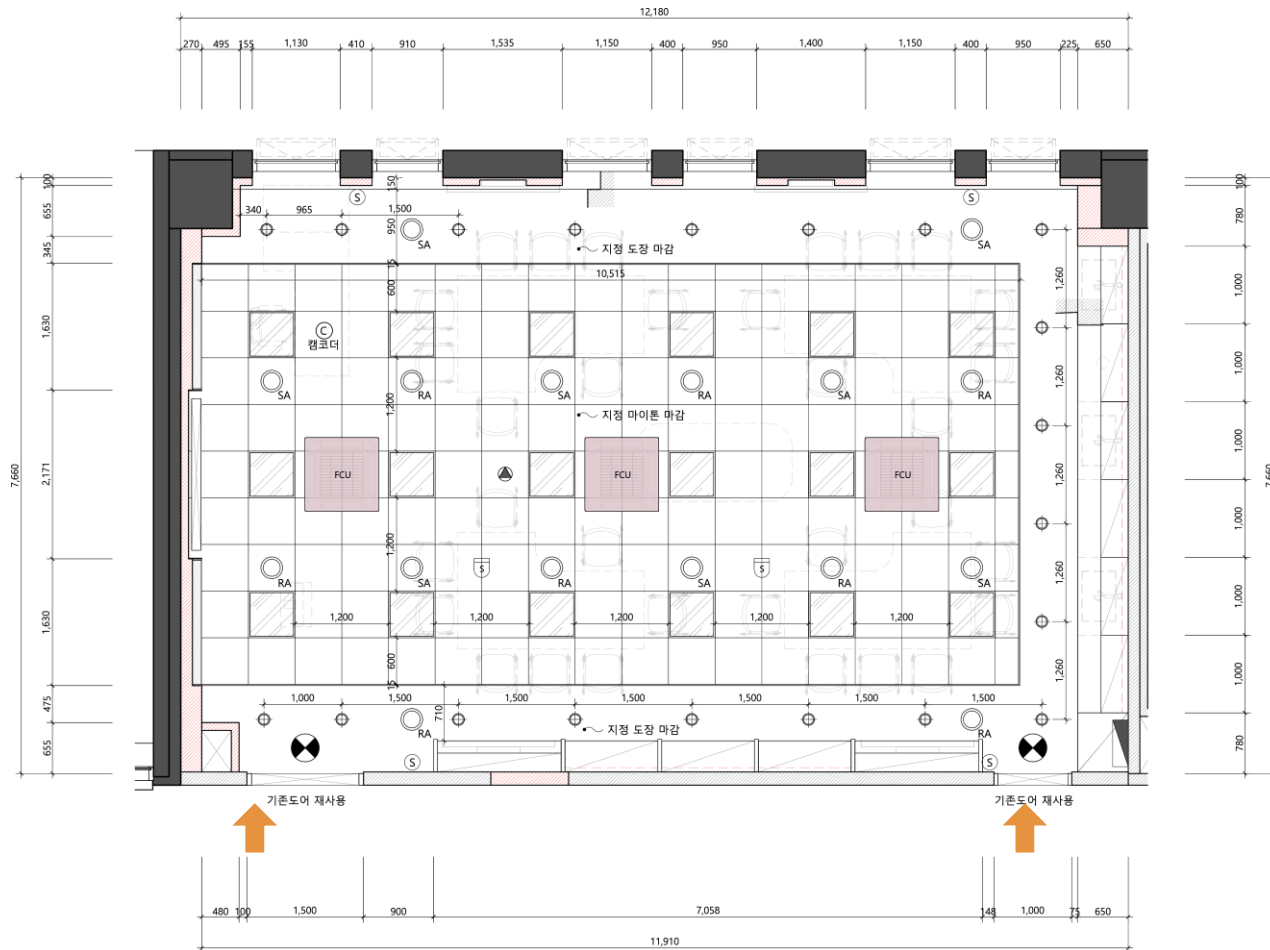
AREA : 102.5m² (31py)

CH : 2,705mm

SEAT : 33EA

02 | 치과재료학 실습실

CAD DRAWING – CEILING PLAN



CEILING PLAN

- 1 천장 마이톤 시공
- 2 S/P 반경 고려하여 일부 이설
- 3 흡배기 시설 설치
- 4 모든 조명은 Flicker Free LED 설치

AREA : 102.5m² (31py)

CH : 2,705mm

SEAT : 33EA

02 | 치과재료학 실습실

3D PERSPECTIVE -1

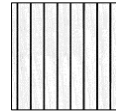
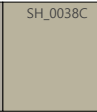
MATERIAL :



1 백페인트
글라스 칠판



2 필름 마감



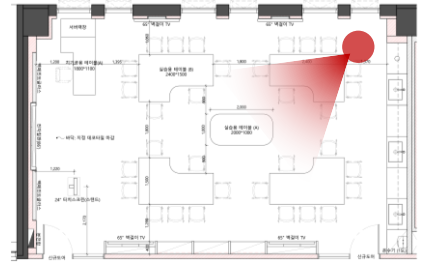
3 호흡라인패널

4 호흡 천장재

5 데코타일

6 Flicker Free
LED

KEY PLAN



02 | 치과재료학 실습실

3D PERSPECTIVE -2

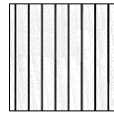
MATERIAL :



1 백페인트
글라스 칠판



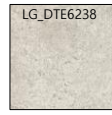
2 필름 마감



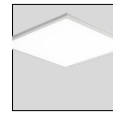
3 흡음라인패널



4 흡음 천장재

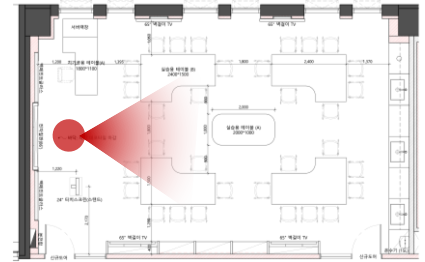


5 데코타일



6 Flicker Free
LED

KEY PLAN



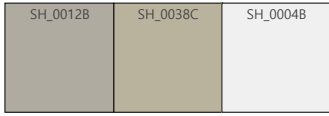
02 | 치과재료학 실습실

3D PERSPECTIVE -3

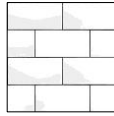
MATERIAL :



1 백페인트
글라스 칠판



2 필름 마감



3 벽타일 (무광)



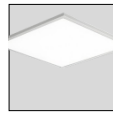
4 텀바보드



5 흡음 천장재

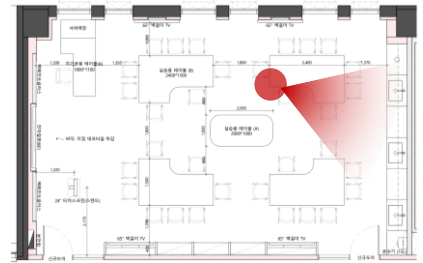


6 데코타일



7 Flicker Free
LED

KEY PLAN



03 | 기초치기공 실습실

CAD DRAWING – FLOOR PLAN



FLOOR PLAN

- 1 북도측 벽면 65" TV 장 & 진열장 설치
- 2 강의실 뒤 싱크장 & 상부장(제작) 설치
- 3 강의실 앞 백페인트글라스 칠판 + 전자칠판 매립설치
- 4 출입문 개방성 있는 유리강화도어 설치

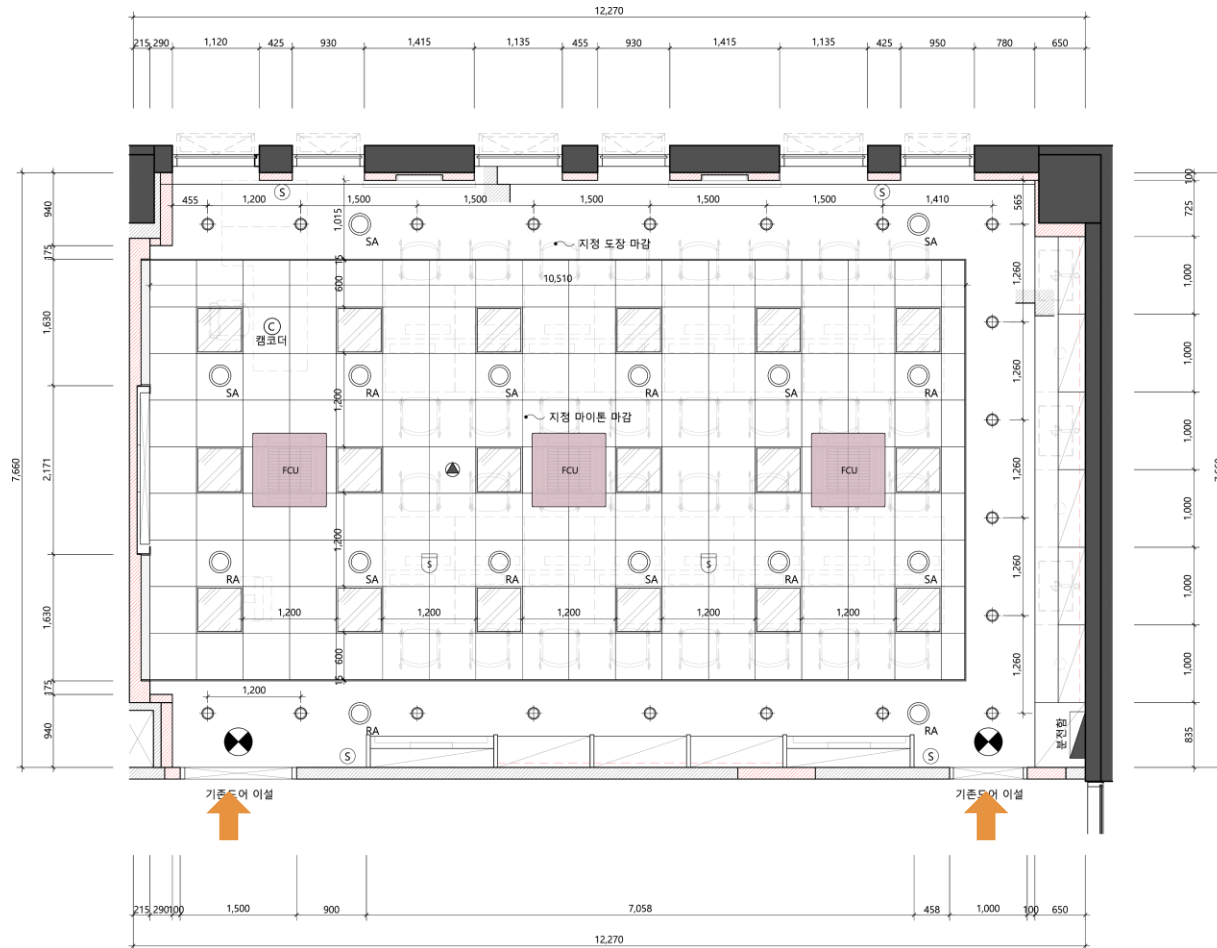
AREA : 102.5m² (31py)

CH : 2,705mm

SEAT : 33EA

03 | 기초치기공 실습실

CAD DRAWING – CEILING PLAN



CEILING PLAN

- 1 천장 마이톤 시공
- 2 S/P 반경 고려하여 일부 이설
- 3 흡배기 시설 설치
- 4 모든 조명은 Flicker Free LED 설치

AREA : 102.5m² (31py)

CH : 2,705mm

SEAT : 33EA

03 | 기초치기공 실습실

3D PERSPECTIVE -1

MATERIAL :



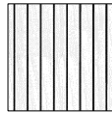
1 백페인트
글라스 칠판



2 페인트 마감



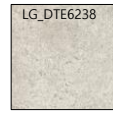
3 인테리어필름



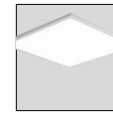
4 흡음라인패널



5 흡음 천장재

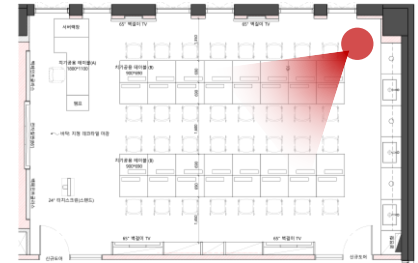


6 데코타일



7 Flicker Free
LED

KEY PLAN



03 | 기초치기공 실습실

3D PERSPECTIVE -2

MATERIAL :



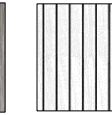
1 백페인트
글라스 칠판



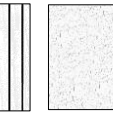
2 필름 마감



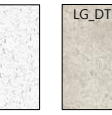
3 인테리어필름



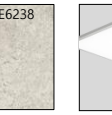
4 흡음라인패널



5 흡음 천장재

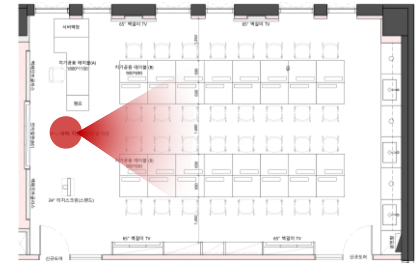


6 데코타일



7 Flicker Free
LED

KEY PLAN



03 | 기초치기공 실습실

3D PERSPECTIVE -3

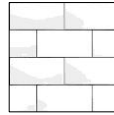
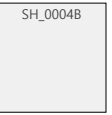
MATERIAL :



1 백페인트
글라스 칠판



2 필름 마감



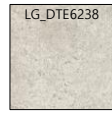
3 벽타일 (무광)



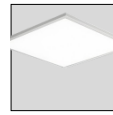
4 텀바보드



5 흡음 천장재



6 데코타일



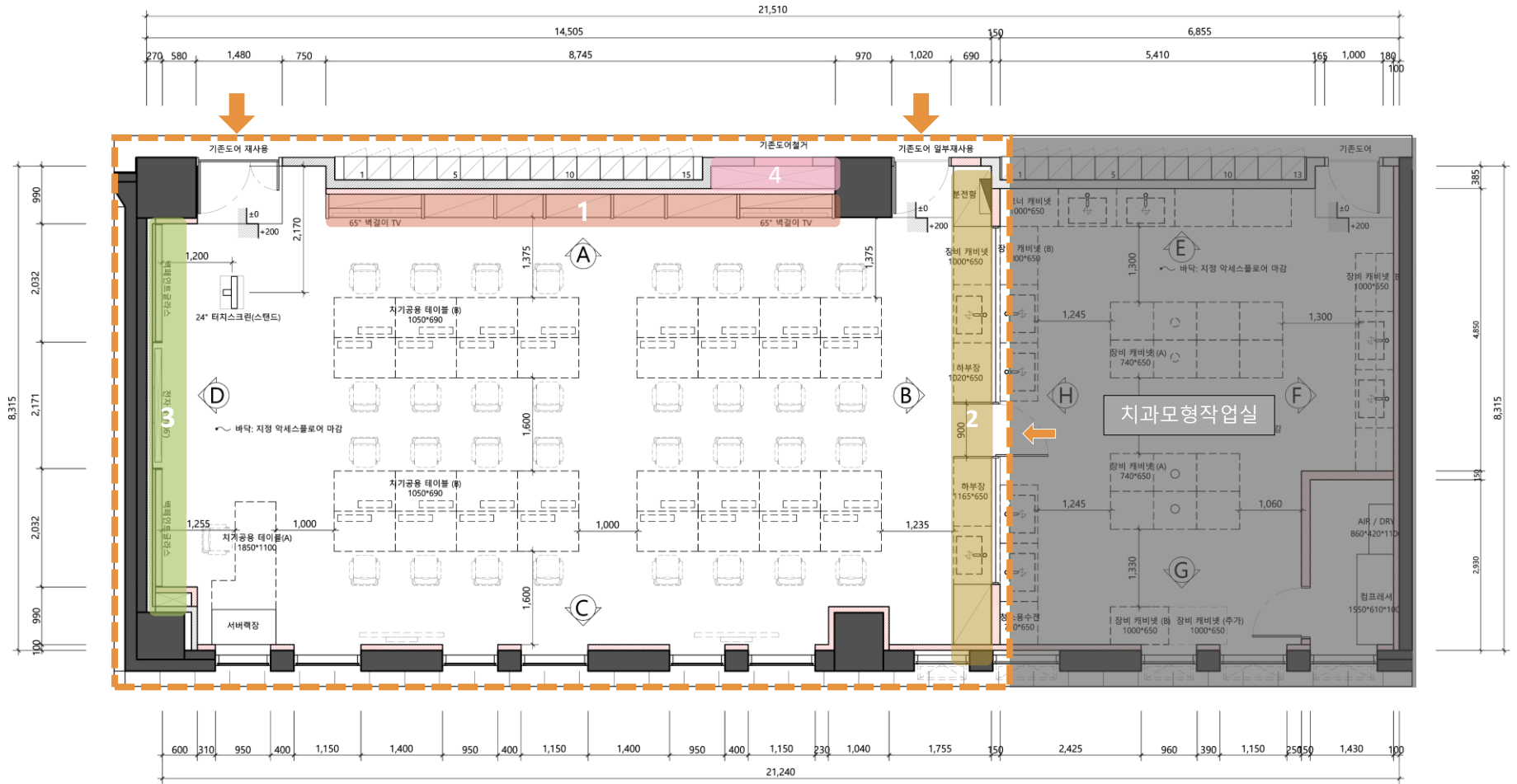
7 Flicker Free
LED

KEY PLAN



04 | 고정정보철치기공 실습실

CAD DRAWING – FLOOR PLAN



FLOOR PLAN

- 1 북도측 벽면 65" TV 장 & 진열장 설치
- 2 강의실 뒤 싱크장 + 치과모형 작업실 출입도어 설치
투명유리 파티션 조성
- 3 강의실 앞 백페인트글라스 칠판 + 전자칠판 매립설치
- 4 분전함 외부 북도 설치

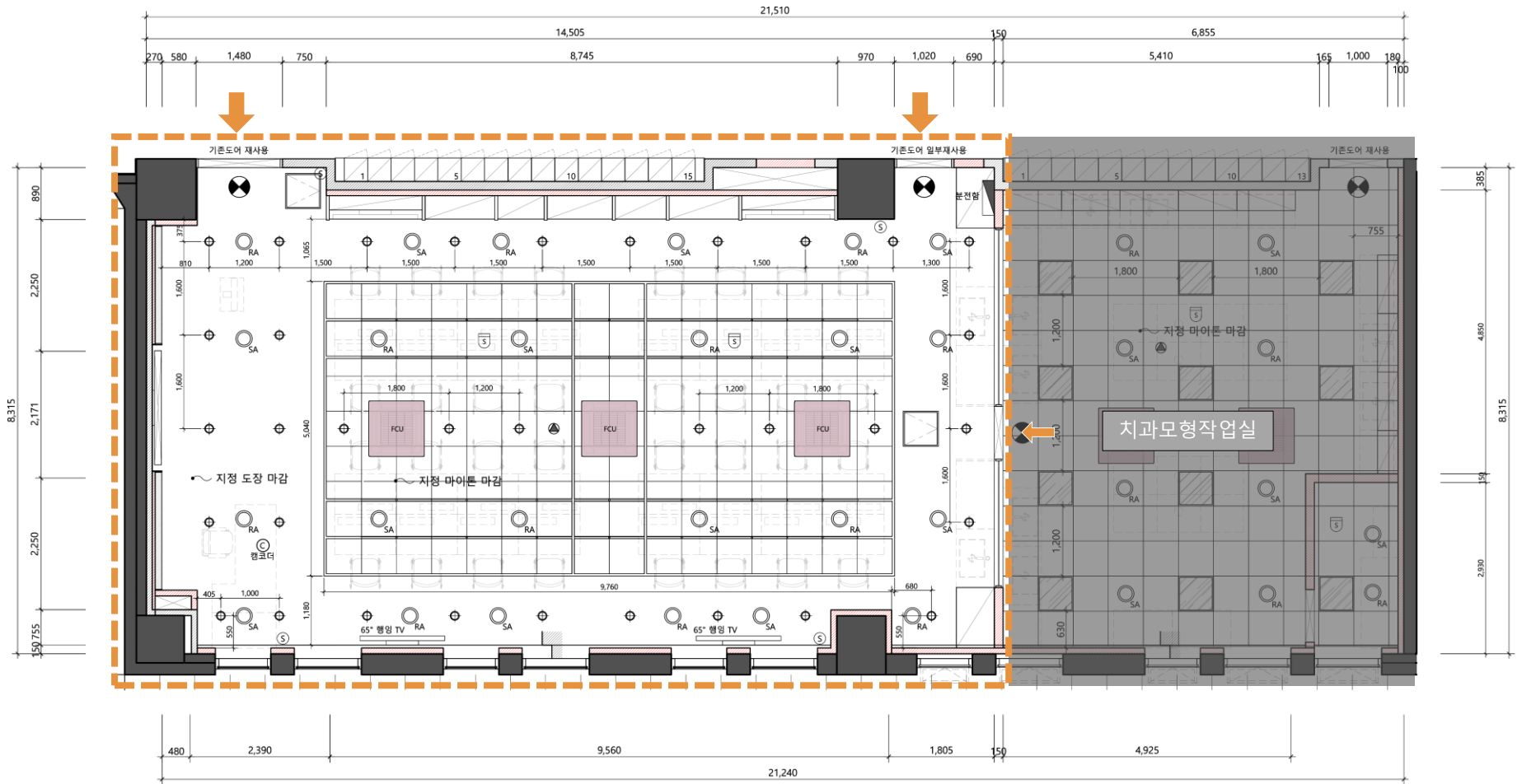
AREA : 122.3m² (37py)

CH : 2,705mm

SEAT : 33EA

04 | 고정정보철치기공 실습실

CAD DRAWING – CEILING PLAN



FLOOR PLAN

- 1 천정 마이톤 & 석고 마감
- 2 라인패턴 천정디자인
- 3 S/P 반경 고려하여 일부 이설
- 4 흡배기 시설 설치
- 5 모든 조명은 Flicker Free LED 설치

AREA : 122.3m² (37py)

CH : 2,705mm

SEAT : 33EA

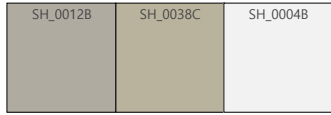
04 | 고정정보철치기공 실습실 (ALT-1)

3D PERSPECTIVE -1

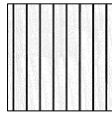
MATERIAL :



1 백페인트
글라스 칠판



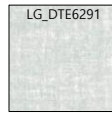
2 필름 마감



3 흡음라인패널



4 흡음 천장재

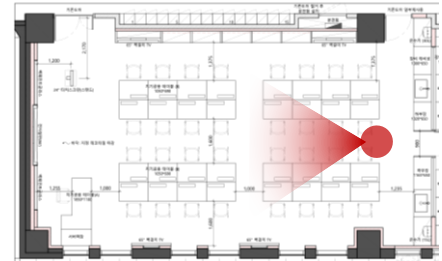


5 데코타일



6 T5 라인조명

KEY PLAN



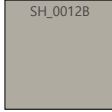
04 | 고정정보철치기공 실습실 (ALT-1)

3D PERSPECTIVE -2

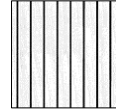
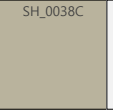
MATERIAL :



1 백페인트
글라스 철판



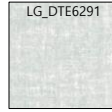
2 짙은 마감



3 흡음라인패널



4 흡음 천장재

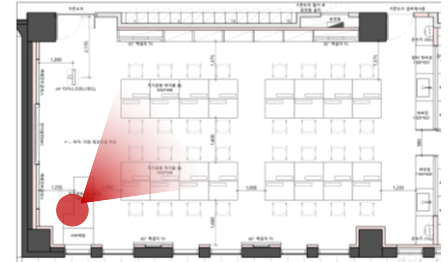


5 데코타일



6 T5 라인조명

KEY PLAN



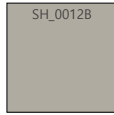
04 | 고정정보철치기공 실습실 (ALT-2)

3D PERSPECTIVE -1

MATERIAL :



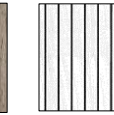
1 백페인트
글라스 칠판



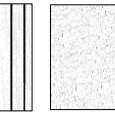
2 페인트 마감



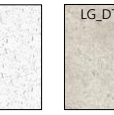
3 인테리어패널



4 흡음라인패널



5 흡음 천장재

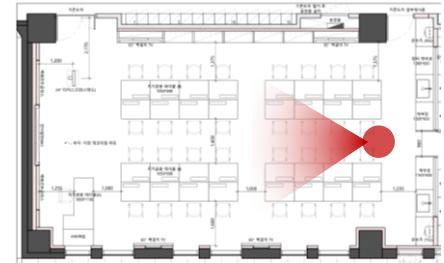


6 데코타일



7 T5 라인조명

KEY PLAN



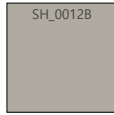
04 | 고정정보철치기공 실습실 (ALT-2)

3D PERSPECTIVE -2

MATERIAL :



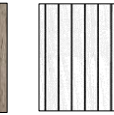
1 백페인트
글라스 칠판



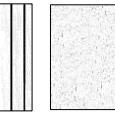
2 페인트 마감



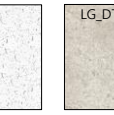
3 인테리어필름



4 흡음라인패널



5 흡음 천장재

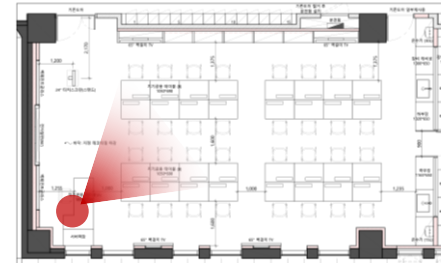


6 데코타일



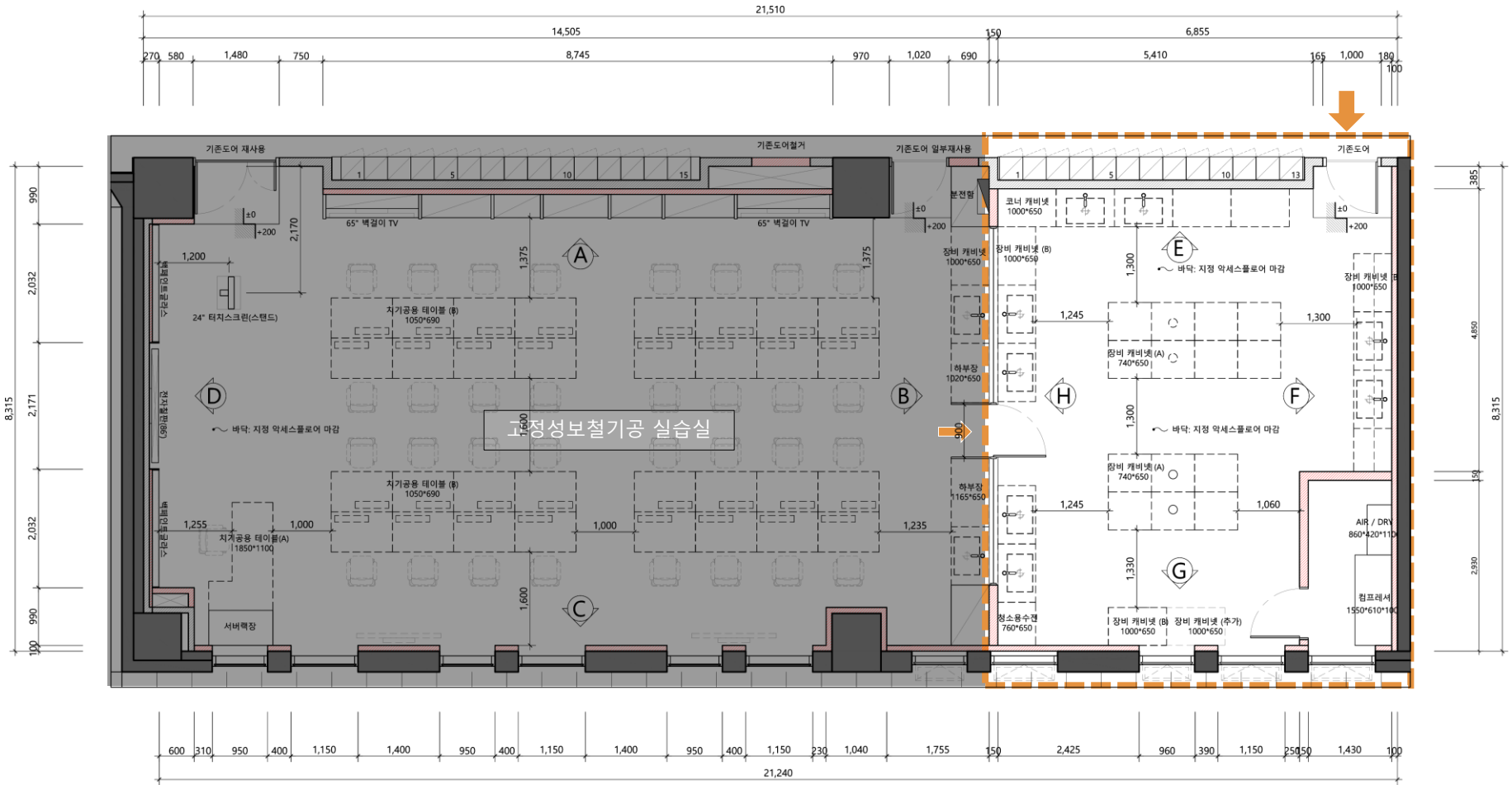
7 T5 라인조명

KEY PLAN



05 | 치과모형 작업실

CAD DRAWING – FLOOR PLAN



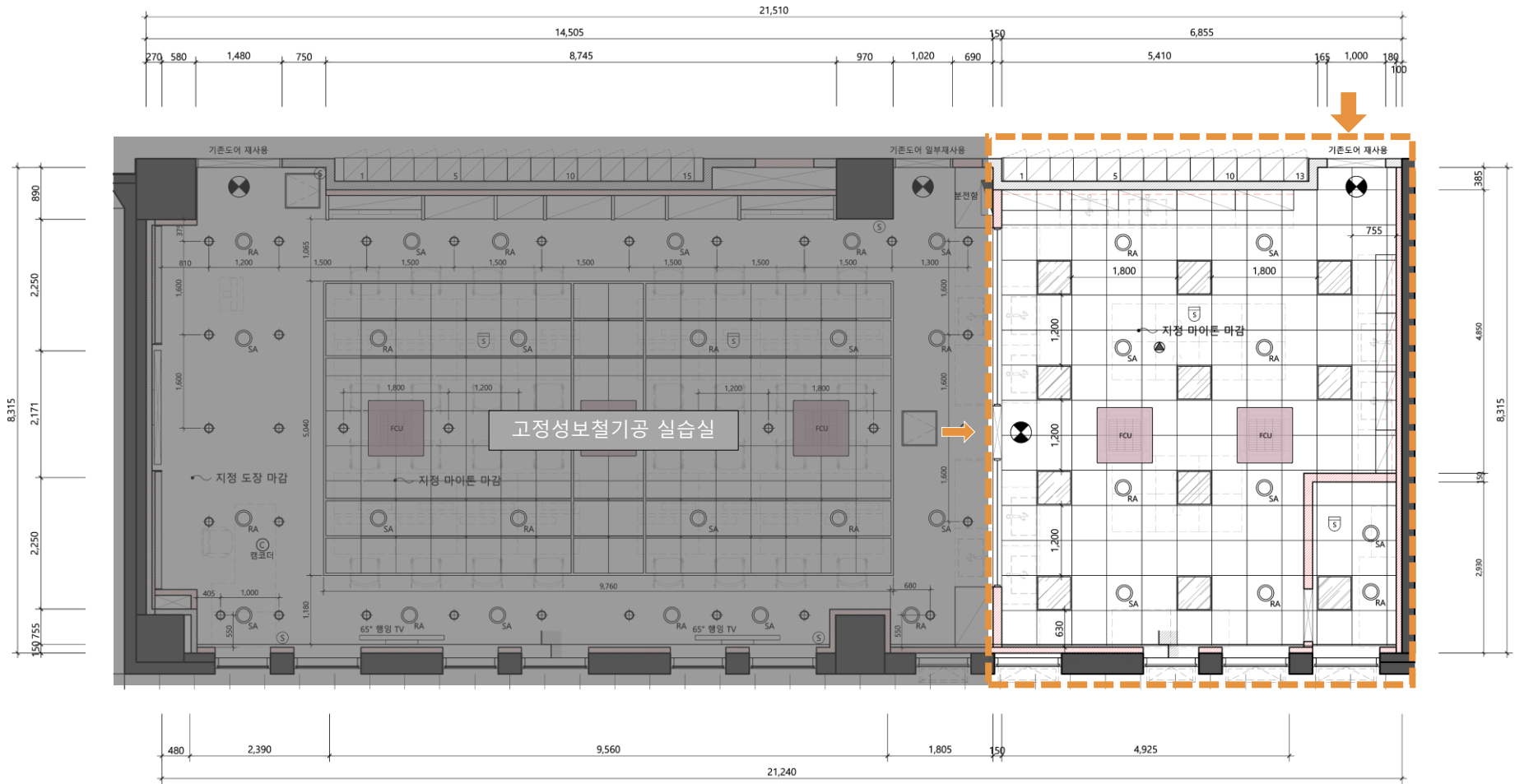
FLOOR PLAN

- 1 컴프레서 보관실 조성
- 2 싱크장 설치 및 상부장 제작 설치
- 3 고정정보철기공 실습실 출입도어 조성
- 4 투명유리 파티션 조성

AREA : 57m² (17.2py)
 CH : 2,705mm
 SEAT : 33EA

05 | 치과모형 작업실

CAD DRAWING – CEILING PLAN



FLOOR PLAN

- 1 천장 마이톤 시공
- 2 흡배기 시설 설치
- 3 S/P 반경에 맞춰 이설
- 4 모든 조명은 Flicker Free LED 설치

AREA : 57m² (17.2py)

CH : 2,705mm

SEAT : 33EA

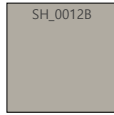
05 | 치과모형 작업실

3D PERSPECTIVE -1

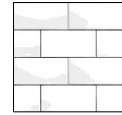
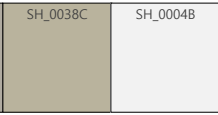
MATERIAL :



1 백페인트
글라스 칠판



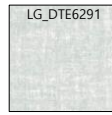
2 필름 마감



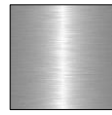
3 벽타일 (무광)



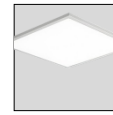
4 흡음 천장재



5 데코타일

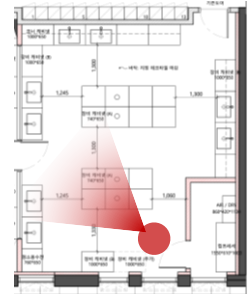


6 SUS(H/L)



7 Flicker Free
LED

KEY PLAN



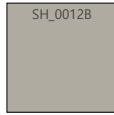
05 | 치과모형 작업실

3D PERSPECTIVE -2

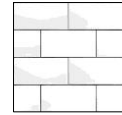
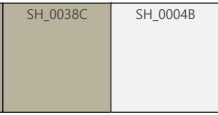
MATERIAL :



1 백페인트
글라스 칠판



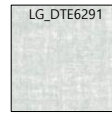
2 필름 마감



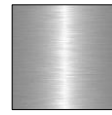
3 벽타일 (무광)



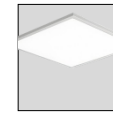
4 흡음 천장재



5 데코타일



6 SUS(H/L)



7 Flicker Free
LED

KEY PLAN

